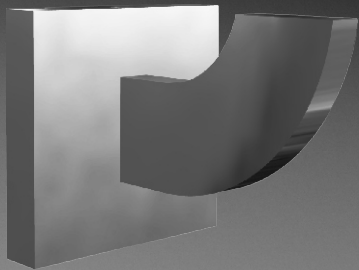


accessories domino

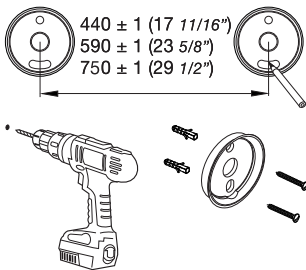
Installation



FRANZ
VIEGENER

Accessories with two supports

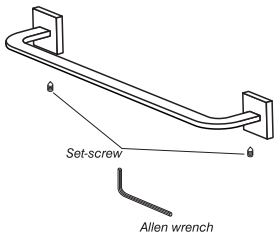
Assembling



For accessories such as towel bars, please bear in mind the following:

a_Mark the distance between both supports before you start. Make sure the holes are at the same height.

b_Follow previous instructions (1, 2 and 3) for affixing the supports.



c_Put the complete set together, and tighten the supports (see picture).